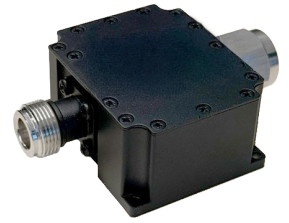


DONOR ANTENNA SENSOR

MODEL NUMBERS: C21-200-100

The CEL-FI® Donor Antenna Sensor enables donor antenna monitoring required by NFPA and IFC codes to any antenna used with the SHIELD Network Unit.



Donor Antenna Sensor



Electrical Specifications

Frequency (MHz)	0.45 ~ 2.7GHz
Insertion Loss	0.5dB
VSWR	1.3:1
Waterproof Level	IP65
PIM&2*30dBm	-125dBC
Impedance (Ω Nom.)	50
Operating Temperature°	-35°C ~ +55°C
Connector	RF: N-F N-M

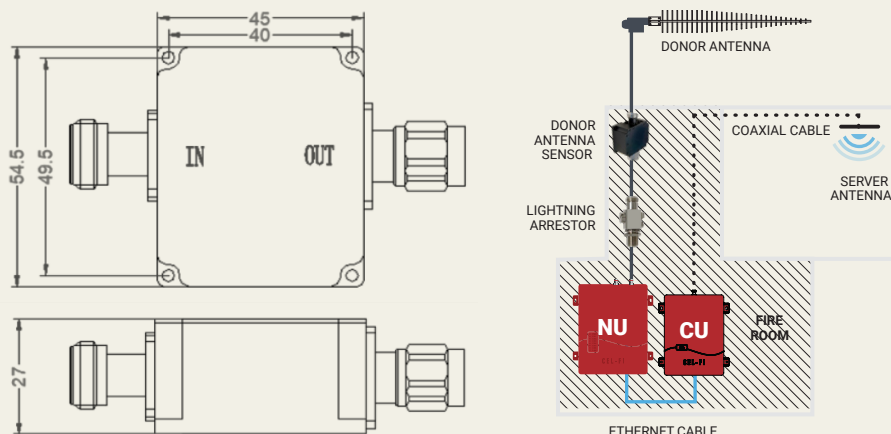
Mechanical Specifications

Dimensions (mm)	45 x 54.5 x 27 mm
-----------------	-------------------

Compatible with

F42-67ENU	SHIELD Network Unit Class A
F42-67ENUB	SHIELD Network Unit Class B

Mechanical Dimensions



IMPORTANT: Product The Donor Antenna Sensor will work with any antenna that presents as a DC open. If the antenna is shorted at DC, a DC block must be inserted between the antenna and sensor.