

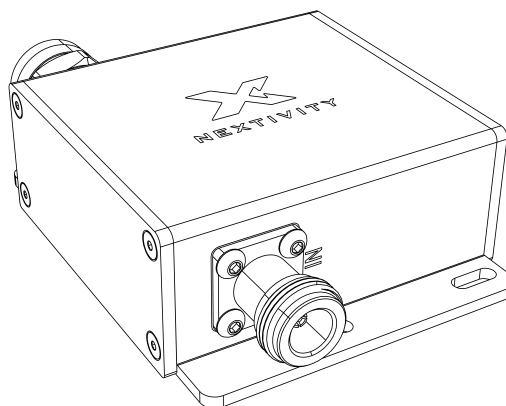


Smart Server Antenna Module

Quick Start Guide

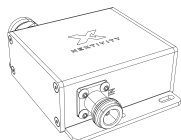
Adds Smart Functionality to your Antenna

KIT#:
J3-1414-30-0A1C

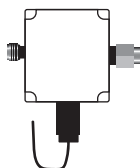


The Smart Server Antenna Module is an active device that upgrades any antenna to a Smart Server Antenna that is compatible with CEL-FI QUATRA and SHIELD product lines. Installation is easy on hard and dropped ceilings. Integration and alarms are accessible via WAVE software.

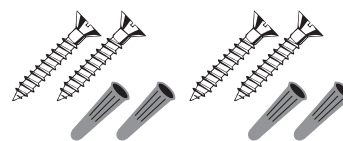
Included In the Box



Smart Server
Antenna Module



Power Inserter

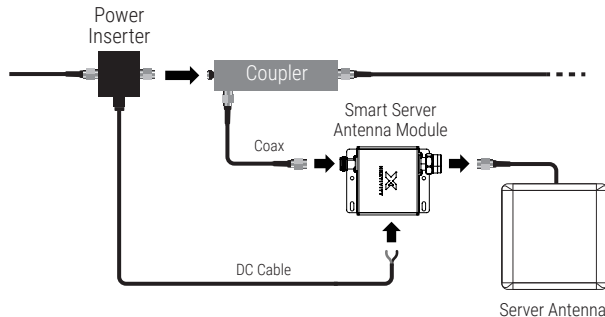


Mounting Screws (4)
Drywall Anchors (4)

Module Installation

DROPPED CEILING INSTALL

STEP 1: Connect the **Power Inserter** to the signal source cable before each coupler/tapper in the Distributed Antenna System (DAS). A typical directional coupler example is shown below.



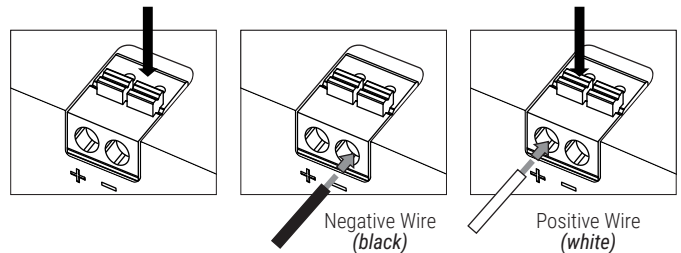
STEP 2: Route the DC and coax cables to the **Smart Server Antenna Module**. Add a separate DC extension cable if needed to reach the desired **Smart Server Antenna Module** installation location.

STEP 3: Connect the coax cable from the signal source to the N-type(f) IN Port of the **Smart Server Antenna Module**.

STEP 4: Connect the coax cable from the server antenna to the N-type(m) OUT Port of the **Smart Server Antenna Module**.

STEP 5: Press the wire release button for negative(-)/black wire on the 2-pin terminal block to insert the stripped wire in to the slot and release the wire button. Gently test the wire by pulling to make sure it is firmly connected.

STEP 6: Repeat Step 4 for the positive(+)/white wire.



STEP 7: The completely connected **Smart Server Antenna Module** can lay on the same ceiling tile that the antenna is mounted to.

HARD CEILING INSTALL

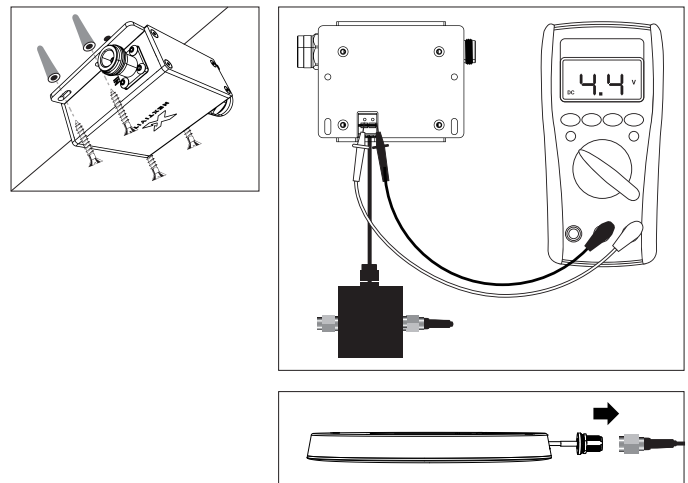
STEP 1: Locate an appropriate hard surface to install the **Smart Server Antenna Module** that will accommodate the DC wire and coaxial cable lengths.

STEP 2: Cable the DC wires and coaxial cables as indicated in this guide.

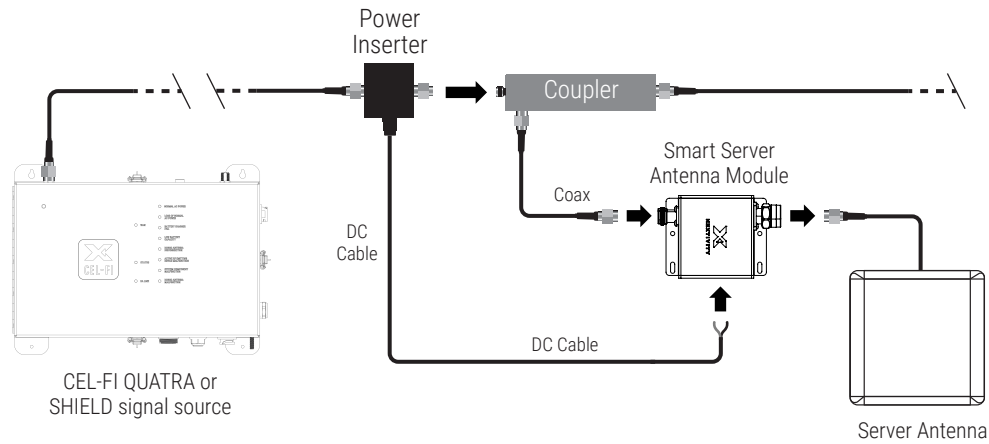
STEP 3: Mount the Smart Server Antenna Module using the supplied anchors and screws, taking care not to strain the cables or connectors.

VERIFY OPERATION

Confirm that the Distributed Antenna System (DAS) is fully installed. With the Nextivity system powered on and properly connected to the **WAVE Portal** in the cloud, the **Smart Server Antenna Module** and its MAC address should appear on the **WAVE Portal** beside the Coverage Unit (CU) it is connected to. If the module does not appear for a particular CU, verify that the **WAVE Portal** connection is **Active**, and inspect all wiring and connections. Use a multimeter to verify that at least 4.4 vdc is being received by the module.



Connection Diagram



Review the latest authorized antennas at: nextivityinc.com/products/#antennas

Copyright © 2025 by Nextivity, Inc., U.S. Patents pending. All rights reserved. The Nextivity and CEL-FI logos are registered trademarks of Nextivity, Inc. All other trademarks or registered trademarks listed belong to their respective owners. Designed by Nextivity, Inc. in California.

qsg_smart-server-module_25-1117