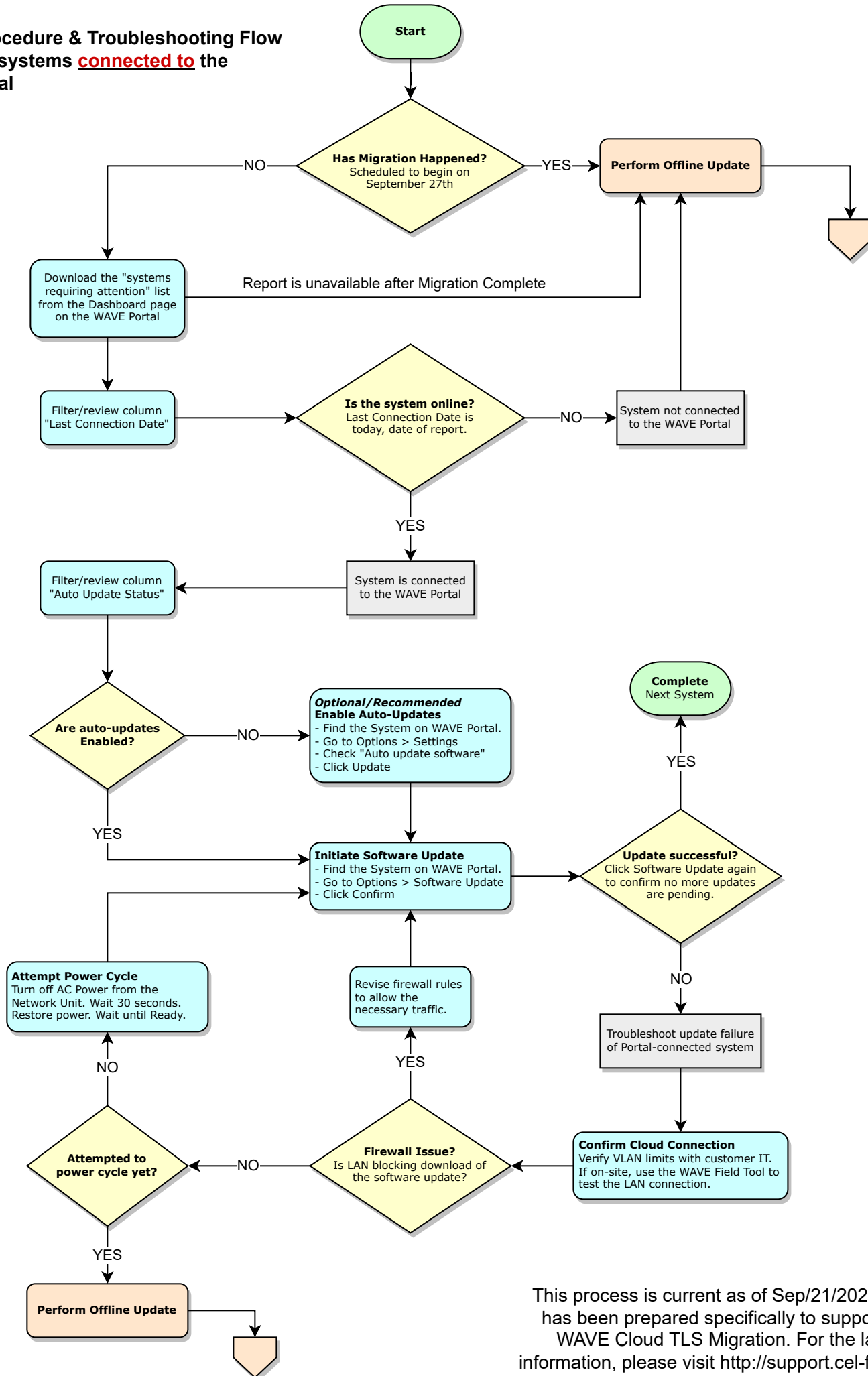
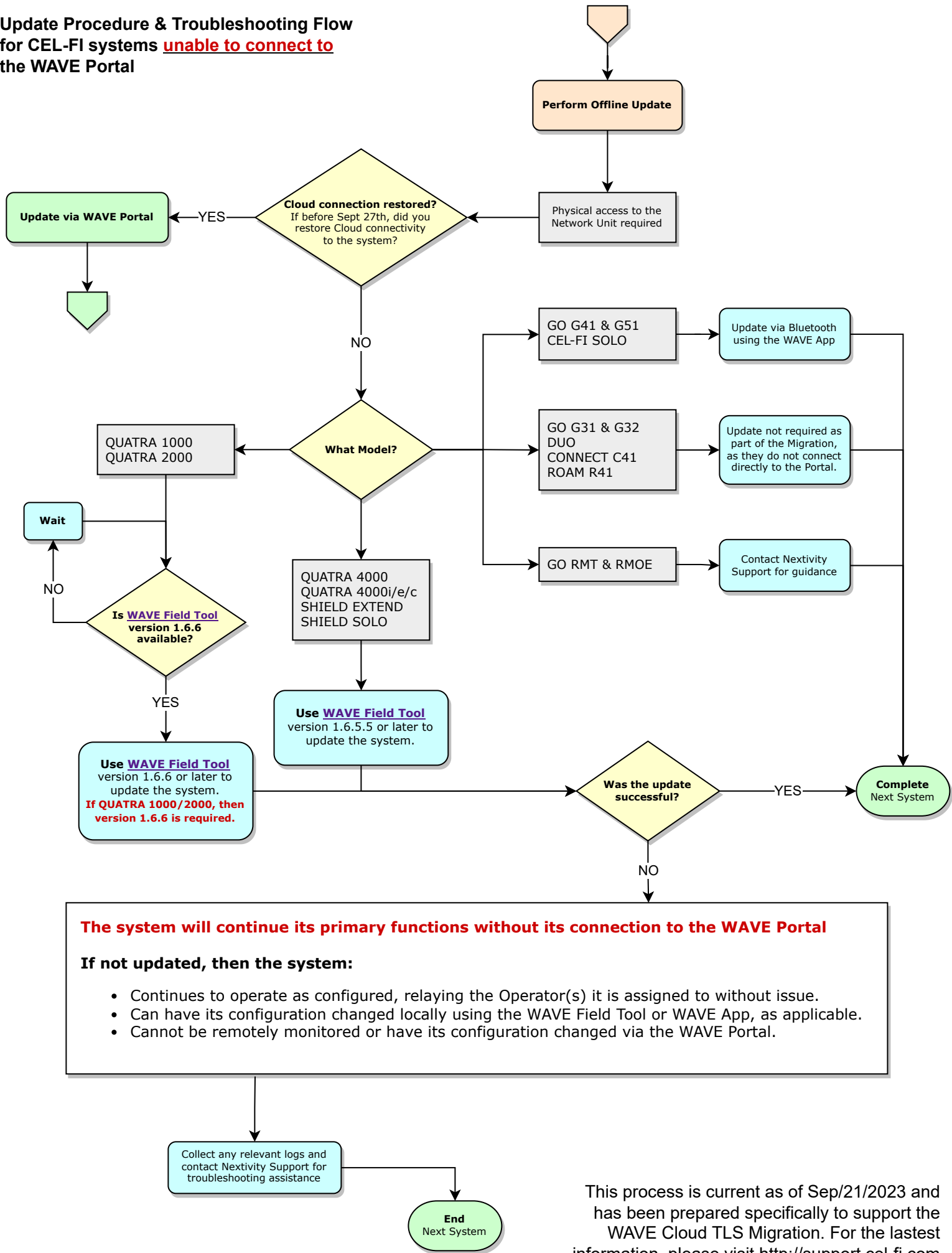


Update Procedure & Troubleshooting Flow for CEL-FI systems connected to the WAVE Portal



This process is current as of Sep/21/2023 and has been prepared specifically to support the WAVE Cloud TLS Migration. For the latest information, please visit <http://support.cel-fi.com>

Update Procedure & Troubleshooting Flow for CEL-FI systems unable to connect to the WAVE Portal



This process is current as of Sep/21/2023 and has been prepared specifically to support the WAVE Cloud TLS Migration. For the latest information, please visit <http://support.cel-fi.com>