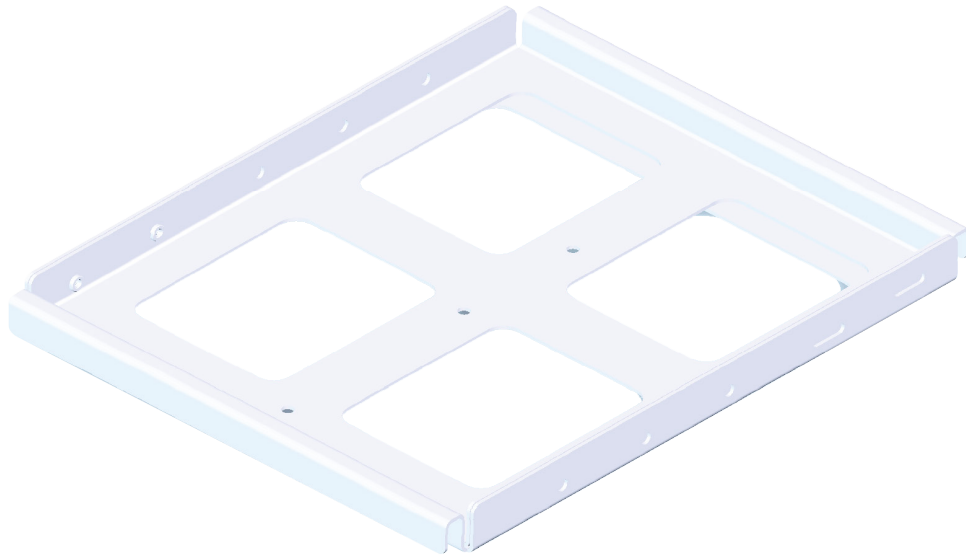


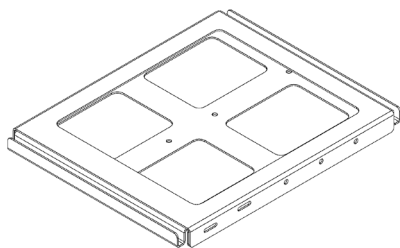
CEILING MOUNT ACCESSORY Quick Start Guide



M/N:
CMA-100-100

The Ceiling Mount Accessory is an optional accessory that allows CEL-FI QUATRA 4000 and CEL-FI QUATRA EVO Coverage Units to be installed in suspended ceilings. The ceiling tile mount consists of two bracket halves that slide together and secure using set screws, allowing the mount to adjust to different suspended ceiling grid sizes.

Included In the Box



1x Ceiling Mount Accessory



4x M5 5.3mm Washers



2x 1/4-inch Washers



4x M5 x 10mm Screws



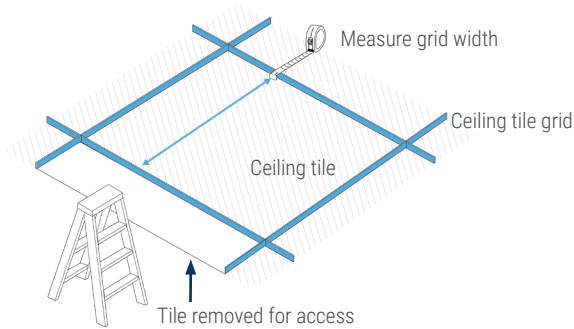
2x 1/4-20 x 5/8-inch Screws

Quick Installation

SAFETY: Please use proper safety measures when working on a ladder or lift and when working with a suspended ceiling. Wear a protective cap, gloves, and eye shielding to protect from falling debris such as dust, tile fragments, or tools.

1

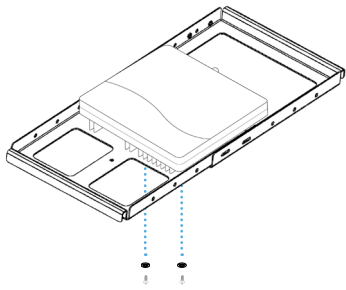
Access Ceiling Grid and Measure It



Using a suitable ladder or lift, remove a ceiling tile that is adjacent to the tile where you wish to mount the CU. Measure the ceiling tile grid width as shown in the diagram above.

3

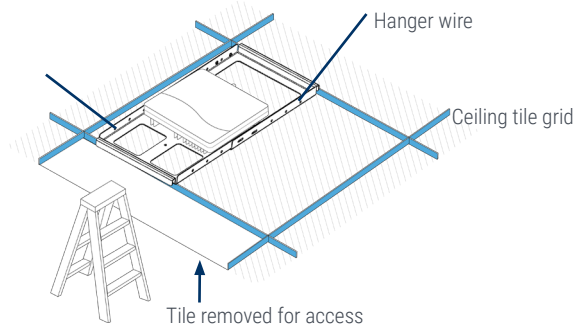
Mount CU to the Ceiling Mount Accessory



Now secure the CU to the **Ceiling Mount Accessory** using the two supplied $\frac{1}{4}$ -inch Washers and $\frac{1}{4}$ -20 x 5/8-inch Screws.

5

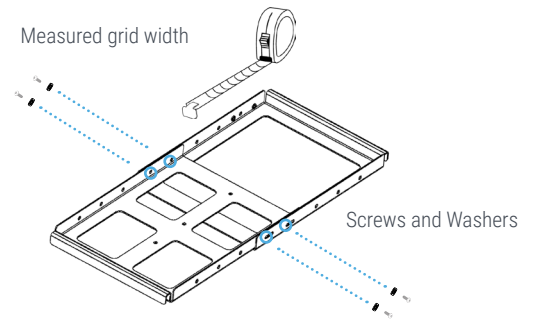
Reinforce Ceiling Mount Accessory with Hanger Wire(s)



The **Ceiling Mount Accessory** weight should rest only on the grid frame, and no weight should be on the ceiling tile. Two hanger wires or similar safety tethers are recommended, in case the ceiling grid or mount should ever fail. Follow local building requirements where necessary.

2

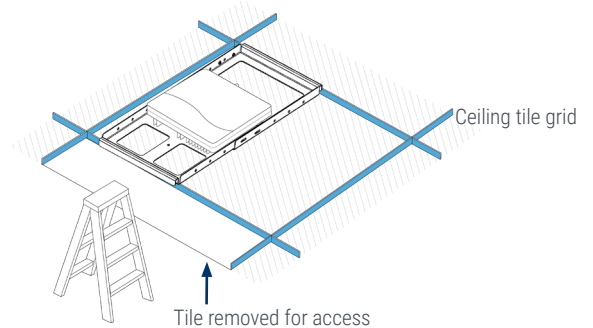
Unbox and Assemble Ceiling Mount Accessory



Remove both pieces of the **Ceiling Mount Accessory** from the box and assemble them according to the measured grid width using the four supplied **M5 Screws and Washers**.

4

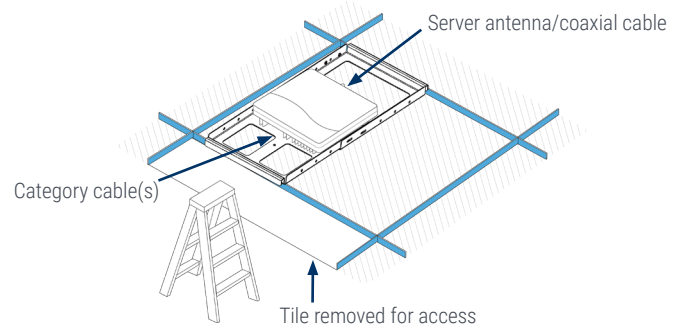
Lift the Assembly into Place



Lift the CU and **Ceiling Mount Accessory** assembly through the ceiling opening and place it on the grid where it will be installed per measurement in previous step.

6

Connect Cables to CU



Connect the category cables (from the Network Unit) and server antenna or server antenna coaxial cable to the CU.