

CEL-FI CONNECT C41


Self-Install Smart Signal Repeater

 Performance Leadership

 Ease of Install

 Leaders in Value

 Fast Set Up

 Carrier Grade Approved



Improve Cellular Coverage in Minutes

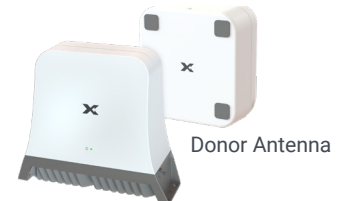
For as powerful as our phones are and for as much as we depend on them, receiving a strong cellular signal can still be a challenge inside many homes and businesses. Too often people need to go outside to make a call or send a text. Designed to provide homeowners and businesses a fast, easy way to improve cellular connectivity indoors, the CEL-FI CONNECT C41 self-install smart signal repeater combines plug-and-play operation with industry-leading performance to boost cellular signals and ensure reliable coverage quickly.

More Bars in No Time

Whether you need to boost coverage inside your home or run a business and need to keep employees and guests connected, the CONNECT C41 ensures reliable connectivity by bringing the power of the network indoors. In just a few simple steps, CONNECT C41 can be set up, powered on, and improve 3G, 4G, or 5G cellular connectivity within minutes. Once the system is up and running, you select what Mobile Network Operator (MNO) signal to boost via the Nextivity WAVE App – and you can switch the network at any time.

Unmatched Performance

Equipped with the latest 4th generation Nextivity proprietary IntelliBoost chip, CONNECT C41 features the same technology that is used in our enterprise cellular coverage solutions. This gives you industry-leading signal gain that ensures you can always make a call, send a text, stream those can't-miss shows, or use your favorite apps.



CEL-FI CONNECT C41

Enhance Your Coverage:

Best-in-class signal boosting for better In-building coverage

Plug and Play:

Quick and easy set up for improving connectivity in minutes

4th Generation IntelliBoost Chip:

Latest Nextivity proprietary chip ensures industry-leading performance

Voice and Data Coverage:

Call, text, stream, or post inside your home, office, or store

Operator Switching:

Select which operator signal to boost and easily change whenever you want via the WAVE App

Network Safe:

Approved by the carriers to boost their signals