

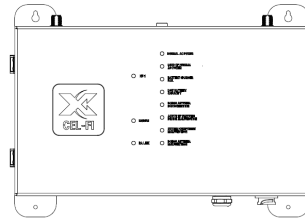
Cel-Fi SOLO RED: Hardware Checklist

Antennas (Donor, and Server)



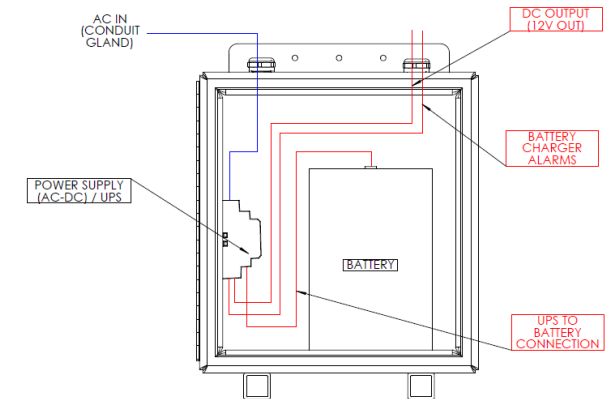
- Antenna model(s) identified
- Antenna location identified
- Antenna mounting hardware
- Building entrance point for cabling, and weatherproofing
- Grounding and lightning protection if needed
- Coaxial cable feeds of proper length
- Cable RF terminator types and genders verified

BDA Mounting



- BDA location, mounting hardware, power
- BDA Internet connection
- Write down BDA serial numbers for commissioning
- Mount and aim high site antenna
- Run donor antenna cable
- Install and cable service antennas

BBU to BDA Wiring



- Connect power, alarm and ground cables for the BBU and SOLO RED
- LAN management cable (per WAVE Portal firewall specs)
- Install BBU battery and connect battery power cables
- Power on the BBU + SOLO RED

Training & Wave Portal Access



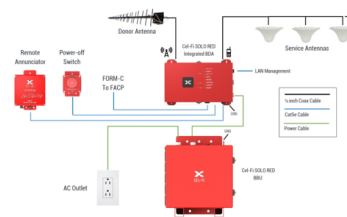
- Become familiar with product information at www.cel-fi.com/products
- Request portal access at www.cel-fi.com/account-request
- Complete the on-line Cel-Fi University course that is emailed to you.
- Upon course completion, you will receive your Portal login email invite.
- Before any install, contact your distributor if you don't see the SOLO RED serial numbers under the Access tab of the Portal.

Site Survey & Planning



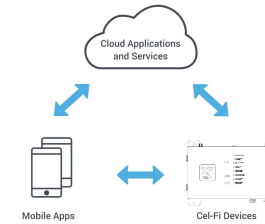
- Define the building: Address, size, interior wall materials (framed, concrete), ceiling (solid, suspended, open), and photos of areas (usage)
- Use the BOM Estimator Tool (www.cel-fi.com/support/bom-estimator/) to estimate HW needs (adjust later as plan details dictate).
- Decide which LMR bands need better service.
- Measure existing LMR service using COMPASS XR.
- Choose donor antenna location(s), or other donor source for best signal quality and data rates.
- Choose location for SOLO RED and Battery Back-up Unit
- Work with local IT staff to authorize SOLO RED internet access.

Install



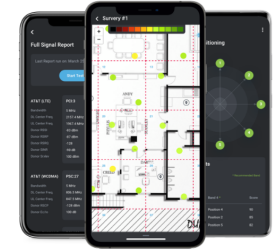
- Power on the BBU and SOLO RED
- Verify SOLO RED LAN connection to WAVE Portal (Cloud)

Commission



- In the WAVE Portal, create your site (address), System Config File (Channel List) and installation package (Link Budget).
- Connect WAVE Pro App to SOLO RED over Bluetooth.
- Upload the installation package to SOLO RED.

Evaluate & Optimize (if needed)



- Verify LED status on all hardware (resolve any alarms).
- Test all PS system alarms (Resolve any issues).
- Coverage test (If using Compass XR, Upload test results to the portal and print survey report).
- Test with AHJ when ready.
- If a parameter adjustment is requested, enter new value in portal install package, and use the WAVE PRO app to load the adjusted install package to SOLO RED.