



Cel-Fi PRO X Installation Guide

Smart Signal Booster™ Sleeve & Adapter



Box Contents:

- Installation Guide
- Cel-Fi PRO X Network Unit
- Cel-Fi PRO X Coverage Unit
- Cable (Optional)
- Wrench



Installation Guide

Cel-Fi PRO Coverage Unit with **Cel-Fi PRO X**



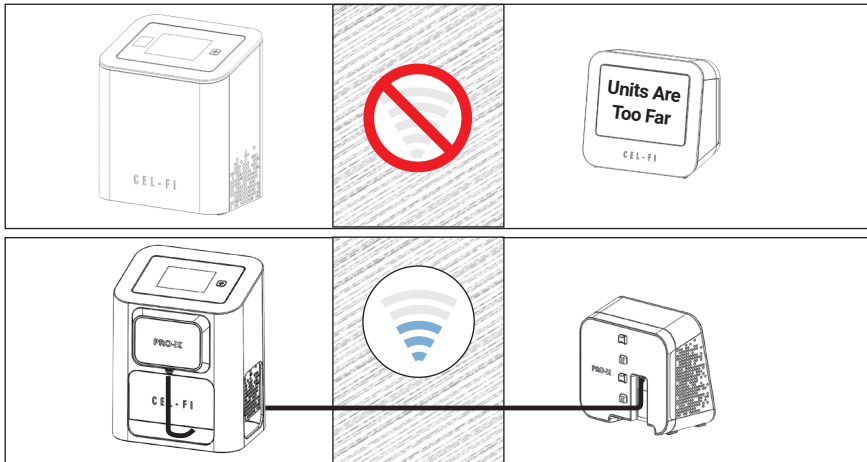
Cel-Fi PRO Network Unit with **Cel-Fi PRO X**



Cel-Fi PRO X consists of:

- one **Cel-Fi PRO X** sleeve for the Cel-Fi PRO Network Unit
- one **Cel-Fi PRO X** snap-on adapter for the Coverage Unit
- four locking tabs

NOTE: Cel-Fi PRO SOLD SEPARATELY. To use **Cel-Fi PRO X**, you MUST have a Cel-Fi PRO system. The adapters are passive devices specifically tuned for the Cel-Fi PRO, and they allow the units to link over a cable despite obstacles that would normally prevent signals to pass.

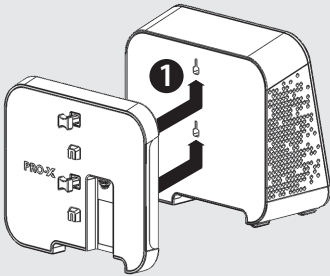


NOTE:

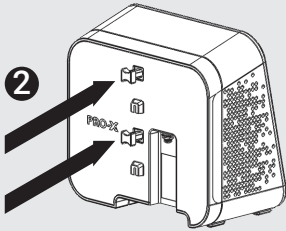
- When **Cel-Fi PRO X** is used, the “Bars” of signal over the CU icon no longer indicate Coverage Potential, which should be maximum with **Cel-Fi PRO X** installed.
- The system may be supplied with a cable, or the installer may supply their own cable that meets the cable specifications.
- **Cel-Fi PRO X** will support Cel-Fi PRO wall Mounting Brackets.

IMPORTANT:

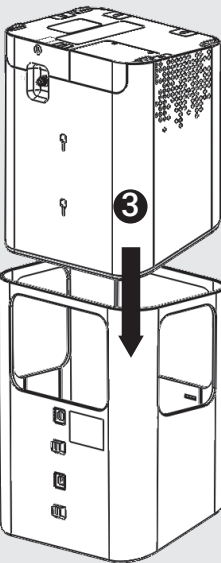
For ideal performance, it is critical that the **Cel-Fi PRO X** units be fitted on the Cel-Fi PRO devices exactly as shown. Misalignment, or poor alignment, could lead to reduced performance.



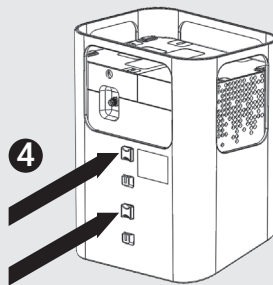
- 1 Using the existing mounting holes on the back of the Cel-Fi PRO Coverage Unit, snap the Coverage Unit **Cel-Fi PRO X** adapter onto the back of the Cel-Fi Coverage Unit, making sure to secure the adapter in place by sliding it upwards so it aligns to the back of the Coverage Unit.



- 2 Lock the adapter in place by inserting the two long rubber locking tabs.



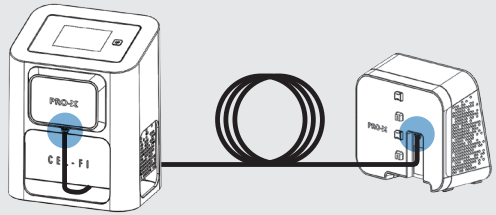
- 3 Turn the Network Unit **Cel-Fi PRO X** sleeve upside down and insert the Cel-Fi PRO Network Unit face down fully into the sleeve. (When upright, the display on the Cel-Fi PRO should be flush with the edges of the **Cel-Fi PRO X**.)



- 4 Before turning the Network Unit right side up, lock the sleeve in place by inserting the two short rubber locking tabs.

CABLE INSTALLATION

Cel-Fi PRO X may be ordered with or without a cable. Any cable may be used providing it satisfies the cable specifications below.



HELPFUL HINTS:

- Find the desired location for the Cel-Fi Network Unit and Coverage Unit to determine the cable route and length. If you are new to Cel-Fi Pro and Cel-Fi Pro X, visit us at www.cel-fi.com for more information.
- Route the cable between the Network and Coverage Units.
- Coil and secure any unused cable where convenient. Additional or unused cable length will not affect system performance, as long as the cable loss specifications are met.

CABLE SPECIFICATIONS

- 50 ohm Impedance
- SMA Male connectors at each end
- Cable loss should be less than **40dB @ 6GHz**.



- Secure the cable at each end so no tension or movement exists at either cable end-connector.
- Using the Cel-Fi PRO Mounting Brackets may help ensure that there is no Cel-Fi Unit movement that might damage the cable or connectors.
- **Finger tighten** the end connectors to both Cel-Fi PRO X connectors using the supplied wrench. Over-torquing the connector could damage the unit.



TROUBLESHOOTING

If the Network Unit and Coverage Units will not link:

- First, inspect the cable connections to make sure they are well seated.
- Next, make sure there is at least 1 meter of separation between either Cel-Fi Unit and any other transmitting device (cordless handset or base, Wi-Fi router, etc.).
- Test that the Cel-Fi Units link properly when in the same room (without the cable). If they will not link please contact **Nextivity Support for assistance at www.cel-fi.com/support**.
- If the Cel-Fi links properly in the test above, inspect the Cel-Fi PRO X and cable connectors for looseness or damage, and

inspect the cable for damage. If damaged, repair or replace the damaged cable.

Not all coverage bars are displayed:

- This is normal. When Cel-Fi PRO X is used, the number of CU bars does not relate to coverage potential, which is most likely maximized with Cel-Fi PRO X.



Any other Cel-Fi system problem:

- See your Cel-Fi Quick Start Guide Troubleshooting Section, or contact Nextivity Support for assistance at www.cel-fi.com/support.

