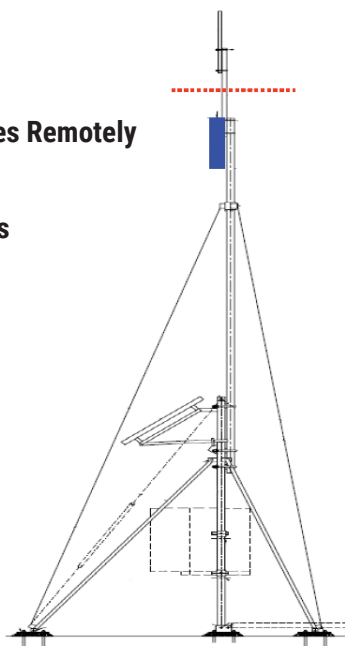


# CEL-FI<sup>™</sup> GO RMOE

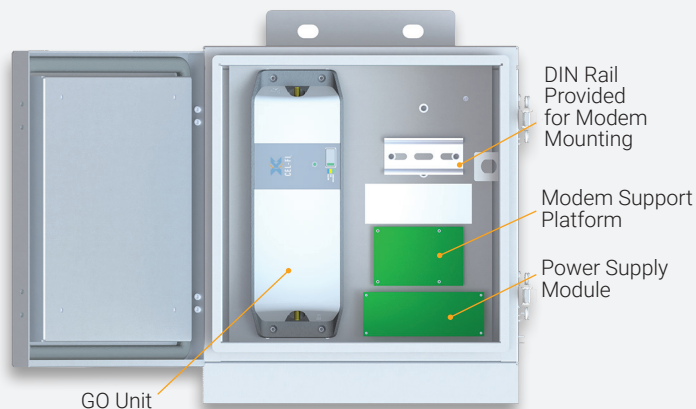
## Remotely Managed Cellular Repeater

The Cel-Fi GO RMOE is a high reliability, ruggedized and remotely managed cellular repeater solution that leverages Nextivity's current Cel-Fi GO product combined with a cellular modem to establish an Internet connection to Nextivity's WAVE management platform. The product is designed to extend the cellular network to remote and rugged locations that are not readily accessible to service technicians, or any area where remote management is desired.

- **Monitor and Manage Devices Remotely**
- **Device Connectivity**
- **Interface Systems and Sites**
- **Carrier-Grade Security**
- **Multiple Web API Options**
- **Network Safe**
- **Ruggedized NEMA 4 Rated**
- **Configurable for Up to 2 Cel-Fi GO Stationary Smart Signal Boosters**



Omni Service Solution



## Product Benefits

**Remote Management:** Users can access the Cel-Fi WAVE portal remotely through the dashboard interface.

**Performance Management:** Easily control systems and ensure optimal performance.

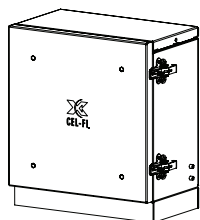
**Remote Troubleshooting:** Troubleshoot and support systems remotely using real-time data and performance metrics.

**WAVE Portal:** Cel-Fi WAVE remote device and asset management, enables data modeling and reporting, and globally trusted carrier-grade security.

**Web Based Applications:** Easy to connect to other web-based services for a fully integrated and remotely managed site solution.

**Ease of Installation:** Cel-Fi GO RMOE intelligently and automatically senses and adapts to its environment — including Operator network changes, or those caused by other nearby Cel-Fi devices or boosters.

### 7 STEP SETUP



#### Step 1:

**Install Product to Wall or Pole**

#### Step 2:

**Mount Modem**

#### Step 3:

**Connect Modem Antennas & Power to Modem**

#### Step 4:

**Connect Antennas to Cel-Fi GO RMOE**

#### Step 5:

**Connect 12V Power to Enclosure**

#### Step 6:

**Validate Power, Repeater, and Connectivity**

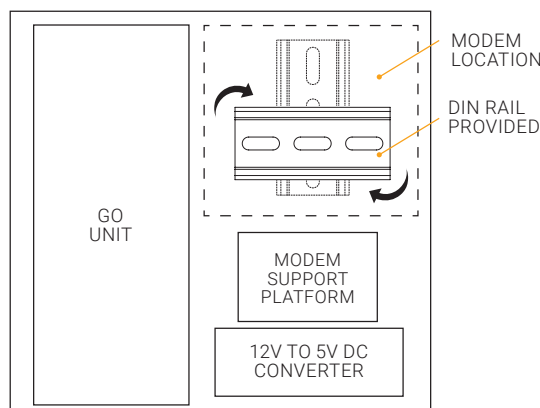
#### Step 7:

**Check Remote Management**

# Specifications

<b>Power</b>	12 to 15 VDC via external supply
<b>Environmental</b>	Ambient operating temperature: -20°C to 55°C Storage temperature: -25°C to 65°C Relative humidity: 0% to 95%, noncondensing
<b>Versions</b>	NEMA 4 Stationary: Cel-Fi GO unit
<b>System Gain</b>	Stationary Unit: Up to 100dB
<b>Remote Management</b>	Cel-Fi WAVE
<b>Antenna Requirements</b>	50ohm antenna matching Antenna cables require: A) N-Type connectors (Donor/Server) B) SMA-Male connectors (Cellular Modem) VSWR <2:0 Antennas should support appropriate device band frequencies
<b>Physical Specifications</b>	300mm(W) x 340mm(H) x 240mm(D) 6kg Pole & Wall mount in kit N-Type Jack Donor Antenna Connector (50 ohm) N-Type Jack Service Antenna Connector (50 ohm) SMA Jack Modem Main Connector (50 ohm) SMA Jack Modem MIMO Connector (50 ohm) SMA Jack GPS Connector (50 ohm)
<b>Standards</b>	R&TTE 1999/5/EC, R&TTE 1999/519/EC (check individual product version for specific regional compliance) EN 301 489-17, 23, EN 301 908-1, 11, 15 EN 300-328, EN 62311 Bluetooth BQB, RCM Mark, CE Mark 3GPP TS 25.143 Rel.10, 3GPP TS 36.143 Rel.10
<b>Provided</b>	Cel-Fi GO RMOE Unit 12V Power Supply
<b>Installer to Provide</b>	External Cables Donor/Server Antennas Modem

<b>Model:</b>	<b>Band</b>	<b>Repeater Model</b>	<b>Cellular Modem</b>
<b>K13-100-100</b>	3/5/28	G31-3/5/28	Not Included
<b>K13-100-200</b>	3/5/28	G31-3/5/28 (2)	Not Included



Copyright © 2017 by Nextivity, Inc., U.S. All rights reserved. The Nextivity and Cel-Fi logos are registered trademarks of Nextivity Inc. All other trademarks or registered trademarks listed belong to their respective owners. Designed by Nextivity in California. brief-Go-RMOE-eng\_17-1004