

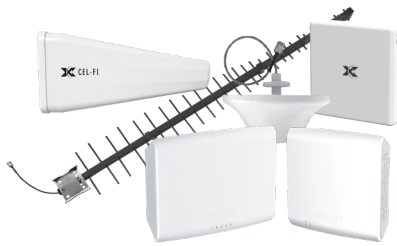


The Most Advanced Technology for Improving Cellular Coverage for Small Business & Residential



Uncompromising Coverage for Any Structure

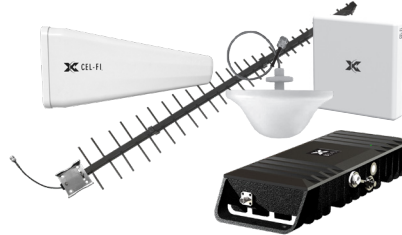
The Cel-Fi product line features the best solutions on the market for addressing the universal challenge of poor cellular coverage in homes or small businesses. In addition to providing exceptional coverage footprints, the systems are unconditionally network safe and carrier approved for voice and data.



CEL-FI QUATRA 1000

Smart Cellular Coverage

- Scalable Coverage: **Up to 50,000 ft²** per Network Unit
- 5G/4G/3G Voice and Data: Carrier-Grade Solution up to 100 dB Max System Gain
- All Digital: Ethernet/Cat5 Based Distribution
- Easy Set Up and Monitoring with Cel-Fi WAVE PRO App and Cel-Fi WAVE Portal



CEL-FI GO G32

Smart Signal Booster[®]

- Coverage: **5,000 to 15,000 ft²** per Unit
- 5G/4G/3G Voice and Data: Carrier-Grade Solution up to 100 dB Max System Gain
- Carrier Switchable & Mode Changeable
- Single and Multi Unit Options
- Indoor/Outdoor NEMA 4 Rated
- Customize Installation via Innovative Cel-Fi WAVE App



CEL-FI PRO/DUO+

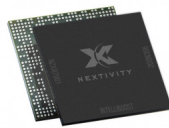
Smart Signal Booster[®]

- Coverage: **3,000 to 13,000 ft²** per System
- LTE/4G/3G Voice and Data
- Single Carrier
- Easy to Install
- No External Antennas Required
- Up to 100 dB Max Gain

The Technology Behind Cel-Fi

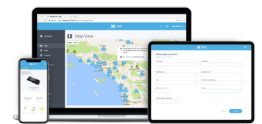
IntelliBoost[®] Chipset

Engineered to deliver industry-leading performance, Nextivity's proprietary IntelliBoost[®] Chipset is at the heart of every Cel-Fi product.



Cel-Fi WAVE Software

Through the web-based Cel-Fi WAVE Portal or WAVE and WAVE PRO applications, installers and building owners can manage and monitor Cel-Fi systems remotely. The WAVE Portal is accessible from any web browser, while WAVE and WAVE PRO are available for iOS and Android devices.



linecard_consumer_22-0412



Nextivity Inc.
16550 West Bernardo Drive, Bldg. 5, Suite 550, San Diego, CA 92127
www.cel-fi.com

Learn More

