



**CEL-FI**  
by NEXTIVITY



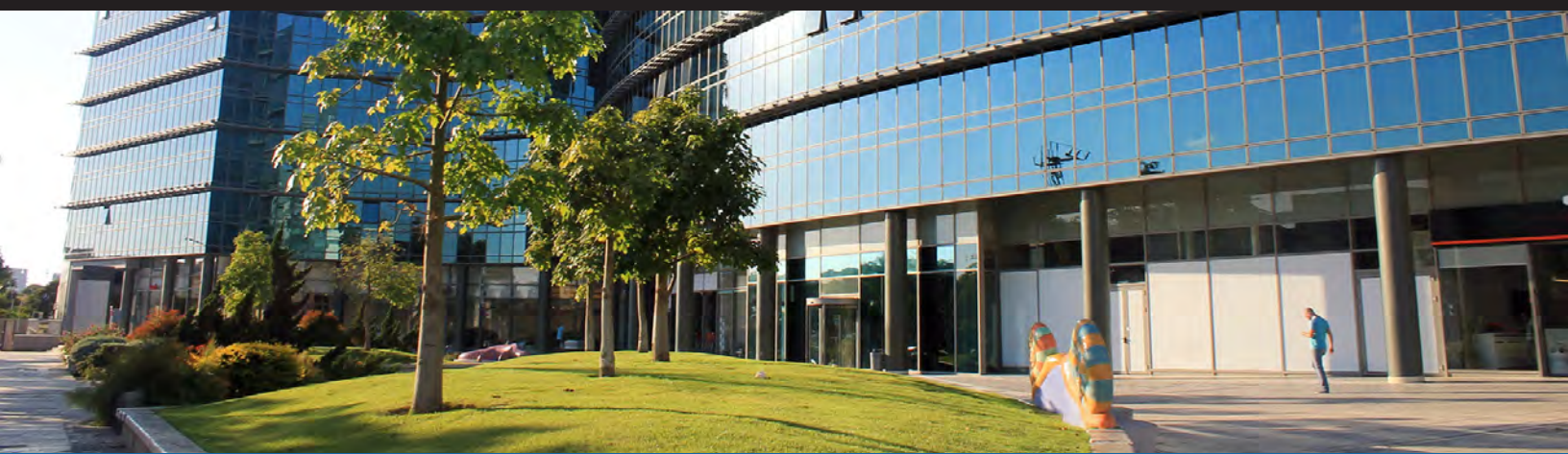
# CEL-FI

Smart  
Cellular  
Coverage

In-Building Enterprise Cellular Solutions

# CEL-FI<sup>™</sup> QUATRA

Smart  
Cellular  
Coverage



- Performance Leadership
- Ease of Install
- Leaders in Value
- Fast Setup
- Carrier Grade Approved

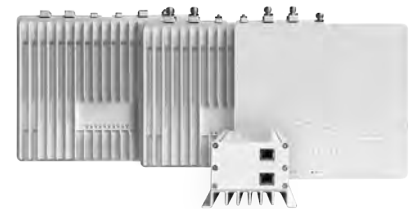
## Build Your Own Coverage with Cel-Fi's Award-Winning Solutions

In today's digital world, the need for strong cellular connectivity in office settings is more important than ever before. Over the years, cellular devices have evolved to become powerful mobile workstation essentials, allowing people to stay connected and work from anywhere with reliable cellular coverage. However, dependable reception at the office is not a given.

From a structure's dense walls and building materials to its location and proximity to cellular towers, there are many factors that impact signal strength. To solve for areas with poor reception, building owners are searching for cost-effective cellular systems that deliver reliable coverage across their facilities and ensure employees can take full advantage of their digital tools.

Cel-Fi's award-winning solutions for enterprise buildings combine industry-leading signal gain with flexibility to support any structure. Available in single, dual, or multi-carrier options, Cel-Fi products are the most powerful solutions on the market. In addition to offering uniform, high quality cellular signal throughout a building, Cel-Fi systems are scalable, cost effective, and designed to be installed in days (compared to months typical of other solutions). Plus, Cel-Fi's carrier-grade solutions are network safe and provide a no noise guarantee.

Unlike older analog boosters and passive DAS technology, Cel-Fi QUATRA and GO systems deliver a cellular signal that is up to 1000x stronger. With best-in-class performance and the scalability to fit enterprise environments of all shapes and sizes, QUATRA and GO allow building owners and installers to create the ideal cellular systems and take their facilities to the next level.



- Highest Coverage Gain:**  
Up to 100 dB Max Gain for 3G/4G/5G Voice and Data
- All Digital:**  
Cat5e PoE/RFoE Solution
- Scalable:**  
Up to 125,000 ft<sup>2</sup> Coverage per Network Unit
- Multi Mode:**  
Off-Air or SuperCell Mode with Fiber Expansion
- Network Safe:**  
Carrier-Approved with No Noise Guarantee
- Cel-Fi WAVE Platform:**  
Setup, Remote Monitoring, and Management

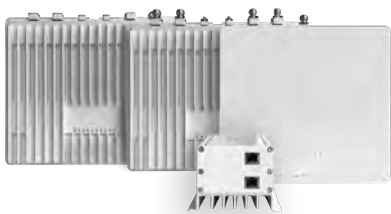
For more information, visit [Cel-Fi.com](http://Cel-Fi.com)



# The Most Advanced Technology for Improving Cellular Coverage for Enterprise

## Smart Cellular Coverage, Clearly Better

The Cel-Fi product line is the best solution available on the market today for addressing the universal challenge of poor cellular coverage in the office. Unconditionally network safe. Exceptional coverage footprint. Carrier-approved for voice and data. Built for carriers, integrators, and IT professionals.



### CEL-FI QUATRA 4000/4000i

#### In-building Cellular Solution

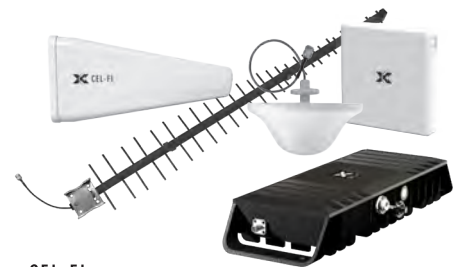
- Scalable Coverage: **125k ft<sup>2</sup>** per Network Unit
- 3G/4G/5G Voice and Data: carrier-grade solution up to 100 dB max system gain
- Ethernet/Cat5 based Distribution, with Fiber Expansion Option
- Multi-Carrier Solutions
- Small Cell or Off-Air Donor
- Monitor and install with the innovative Cel-Fi WAVE Portal



### CEL-FI QUATRA 1000/2000

#### In-building Cellular Solution

- Scalable Coverage: **50k ft<sup>2</sup>** per Network Unit
- 3G/4G/5G Voice and Data: carrier-grade solution up to 100 dB max system gain
- Ethernet/Cat5 based Distribution
- Single & Dual Carrier Solutions
- Small Cell or Off-Air Donor
- Monitor and install with the innovative Cel-Fi WAVE Portal



### CEL-FI GO G32 in stationary mode

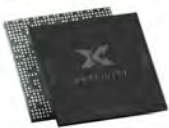
#### Smart Signal Booster™

- Coverage: **5k to 15k ft<sup>2</sup>** per unit
- 3G/4G/5G Voice and Data: carrier-grade solution up to 100 dB max system gain
- Carrier Switchable & Mode Changeable
- Single and Multi Unit Options
- Indoor/Outdoor NEMA 4 Rated
- Customize installation with the innovative Cel-Fi WAVE app

## The Technology & Tools Behind Cel-Fi

### Intelliboost® Chipset

Engineered to deliver industry-leading performance, Nextivity's propriety Intelliboost® Chipset is at the heart of every Cel-Fi product.



### Cel-Fi COMPASS

Perfect for indoor or outdoor environments, Cel-Fi COMPASS is a smart RF handheld scanner for designing, installing, and optimizing Cel-Fi systems.



### Cel-Fi WAVE Software

Through the web-based Cel-Fi WAVE Portal or WAVE and WAVE PRO applications, installers and building can manage and monitor their Cel-Fi systems remotely. The WAVE Portal is accessible from any web browser, while WAVE and WAVE PRO are available for iOS and Android devices.



For more information, visit [Cel-Fi.com](https://www.cel-fi.com)

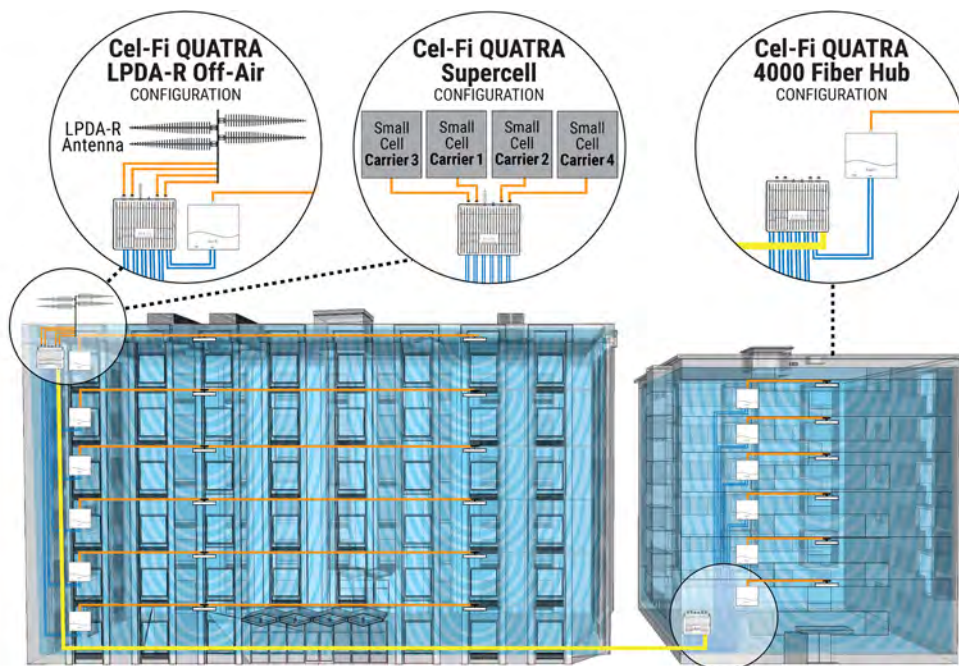
# Find Out Why Operators, Integrators, and Building Owners Have Switched to Cel-Fi

## Smart Cellular Coverage for Any Enterprise Building

Spotty cellular coverage, poor voice quality, dropped calls, and dead zones continue to plague employees and visitors in enterprise buildings. To solve that problem, Cel-Fi solutions are affordable and provide uniform, high quality cellular signal throughout any building. These industry-leading systems are also carrier approved and guaranteed network safe.



## Cel-Fi QUATRA 4000 Installation



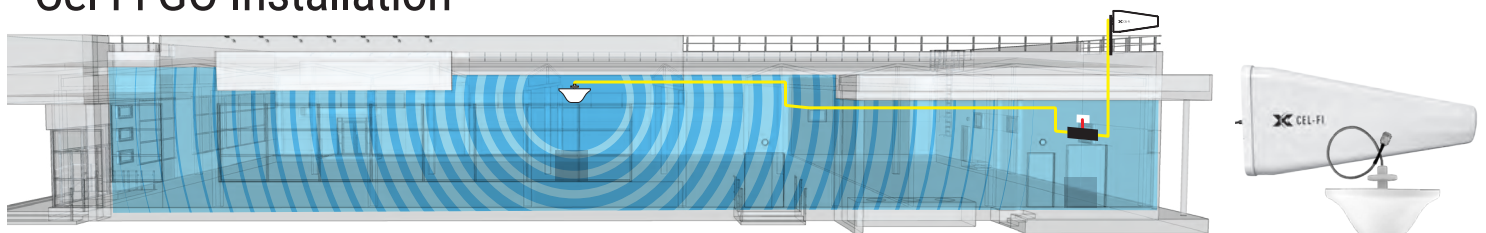
### Cel-Fi QUATRA

With several configuration options, Cel-Fi QUATRA allows installers and building owners to create the perfect solution. In addition to off-air and supercell modes, QUATRA 4000 is compatible with the Cel-Fi QUATRA 4000 Fiber Hub, which significantly expands the system's reach without any signal loss.

### Cel-Fi GO

Offering reliable cellular coverage up to 15,000 ft<sup>2</sup> (1,500 m<sup>2</sup>) per system, the Cel-Fi GO Smart Signal Boosters is ideal for a wide range of enterprise buildings. Needing as few as two antennas — one donor and one server — installers can set up the system and achieve unmatched signal gain within minutes.

## Cel-Fi GO Installation



# Discover the Perfect Cel-Fi QUATRA Solution for Your Building

## OFF-AIR CONFIGURATION





Cel-Fi QUATRA systems are capable of retransmitting donor signals from outdoor directional antennas to indoor locations. Unlike typical BDA amplifiers, each operator channel is individually processed and power controlled to achieve full coverage power. This eliminates channel-to-channel coverage power variations due to differences in power of donor signals.

## SUPERCELL CONFIGURATION



A Supercell is comprised of a Cel-Fi QUATRA system connected to a small cell. Multiple QUATRA systems can be connected to a single small cell, or multiple small cells, to form a Supercell. A Supercell with QUATRA is more efficient than multiple small cells, and the CUs of a QUATRA system connected to a Supercell do not interfere with one another.




## FIBER EXTENSION

Expanding the capabilities of Cel-Fi QUATRA systems, the Cel-Fi QUATRA Fiber Range Extender (QFRE) increases the distance between the Network Unit and Coverage Unit up to 2.0 km (1.24 miles). QUATRA 4000 systems are also compatible with the Cel-Fi QUATRA 4000 Fiber Hub, which offers the same distance flexibility as the QFRE and allows a single NU to support up to 12 CUs. These solutions are ideal for high-rise structures, long distances, or multi-building facilities.

HARDWARE:			
<b>Cel-Fi QUATRA 4000/4000i</b> Multi-Carrier  Network Unit Coverage Unit	<b>Cel-Fi QUATRA 4000 Fiber Hub</b> Multi-Carrier  Network Unit	<b>Cel-Fi QUATRA 2000</b> Dual Carrier  Network Unit Coverage Unit	<b>Cel-Fi QUATRA 1000</b> Single Carrier  Network Unit Coverage Unit

Model Family	Carrier Support Capability	Scalable Coverage per Network Unit (up to sq. ft.)	Coverage Unit per Network Unit	Max Gain (up to dB)	Donor Source Options		Coverage Antenna Options (passive elements available)	All-Digital RFoE & PoE	Bands Supported
					Off-Air Mode	Supercell Mode			
<b>Q4000i Part 90</b>	Multi	125,000	6	100	Yes	Yes	Included Blade / External	Yes	2/4/5/12/13/25 /26/30/41/71
<b>Q4000 Part 20</b>	Multi	125,000	6	100	Yes	Yes	Included Blade / External	Yes	2/4/5/12/13/25
<b>Q2000</b>	Dual	50,000	4	100	Yes	No	Internal / External	Yes	2/4/5/12/13/25
<b>Q1000</b>	Single	50,000	4	100	Yes	Yes	Internal / External	Yes	2/4/5/12
									2/4/5/13
									1/3/8/20
									1/7/8/20
									1/3/7/8
3/5/7/28									

ASSESSORIES:	
<b>Cel-Fi QUATRA 4000 Range Extender</b> 	<b>Cel-Fi QUATRA Fiber Range Extender</b> 

ANTENNAS:		
<b>Cel-Fi Blade Antenna (Included)</b> 	<b>Cel-Fi LPDA-R High-Gain Directional Antenna</b> 	<b>Cel-Fi Low-Profile Antenna</b> 

brochure\_enterprise-us\_21-1022



**U.S. Headquarters: Nextivity Inc.**  
 16550 West Bernardo Drive, Bldg 5, Suite 550,  
 San Diego, CA 92127, USA  
 +1 858.485.9442 tel • +1 858.485.9445 fax

For more information, visit [Cel-Fi.com](http://Cel-Fi.com)